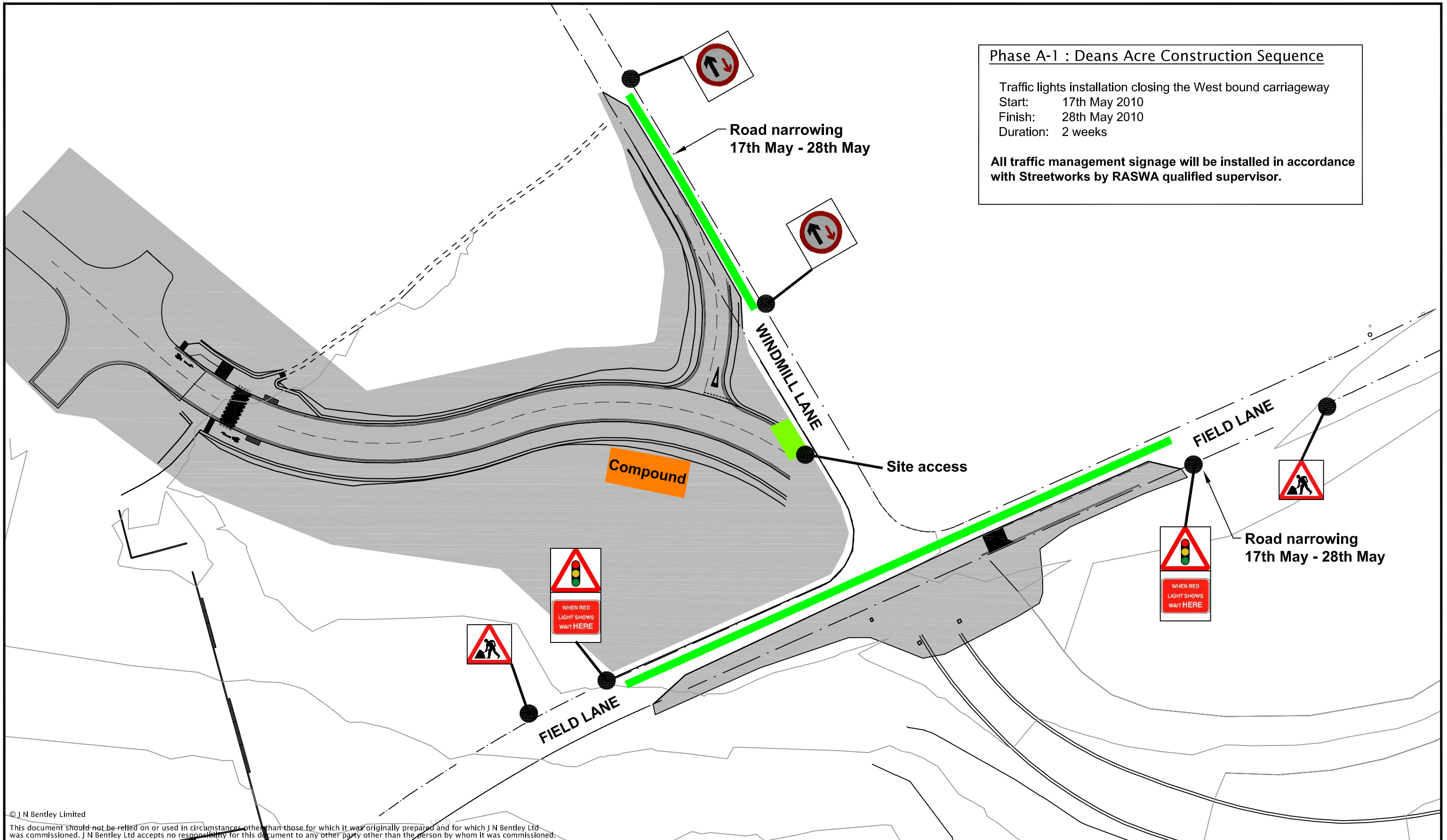


Phase A-1 : Deans Acre Construction Sequence

Traffic lights installation closing the West bound carriageway
 Start: 17th May 2010
 Finish: 28th May 2010
 Duration: 2 weeks

All traffic management signage will be installed in accordance with Streetworks by RASWA qualified supervisor.



© J N Bentley Limited
 This document should not be relied on or used in circumstances other than those for which it was originally prepared and for which J N Bentley Ltd was commissioned. J N Bentley Ltd accepts no responsibility for this document to any other party other than the person by whom it was commissioned.



JN Bentley Limited
 1 West Durham Office Park
 Meadowfield, Durham, DH7 8RD
 Telephone: 0191 378 6700
 Facsimile: 0191 378 6800
 E-mail: Info@jnbentley.co.uk
 Website: www.jnbentley.co.uk

Client



Rev	Date	Drawn	Description	Ch'k'd	App'd
A	22.04.10	BP	Construction Issue	WH	OW

Title	Heslington East Campus Dean's Acre
Title	Traffic Management Phasing Plan Phase A
Drawing No.	J126-DA-011

Drawn	BP
Checked	WH
Approved	OW
Scale at A3	NTS
Rev	Status
A	CON